

WALL STEP LIGHT


Z67388-B 

Please read instructions before commencing installation and retain for future reference.

SPECIFICATIONS

- **Material:** ABS + PC
- **Lamp type:** LED 2W 3000K
- **Ingress Protection:** IP65. Protection against entry of solid objects greater than 12mm in diameter.

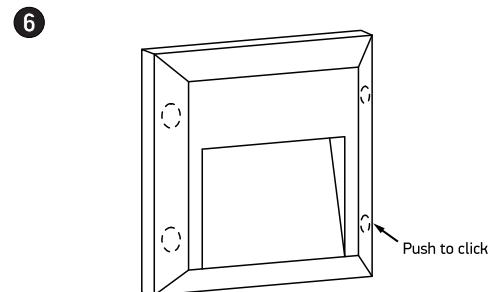
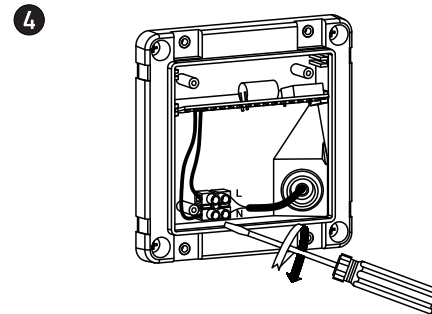
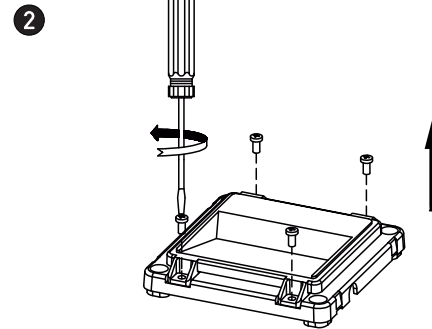
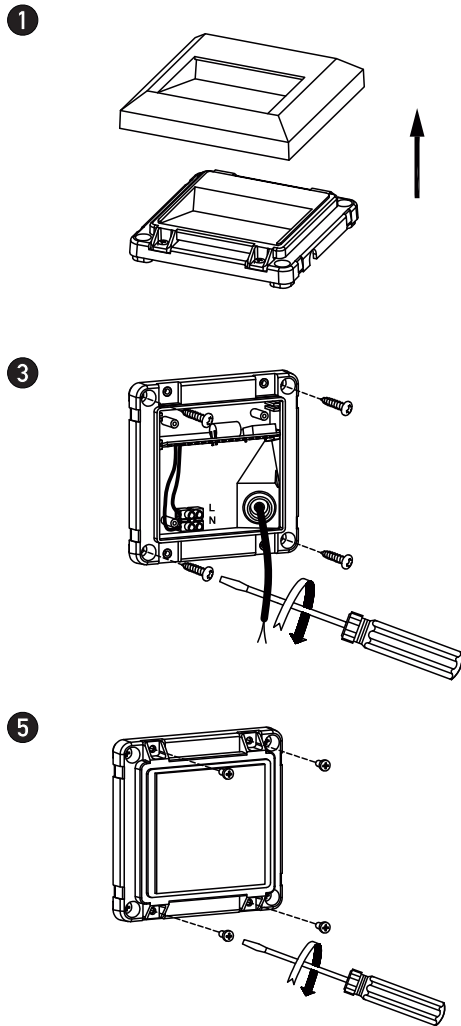
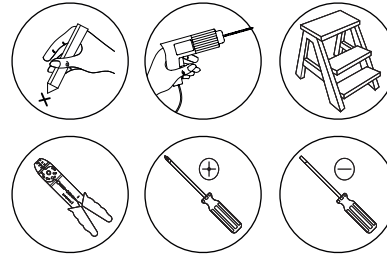
INSTALLATION INSTRUCTIONS

 Electrical products can cause death, injury, or damage to property. Maintenance and installation should only be carried out by a professional electrician.

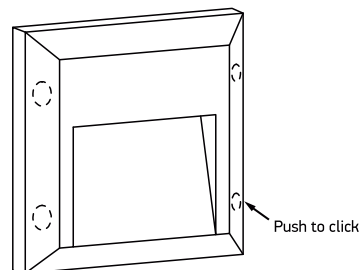
- Ensure main supply is switched off.
- Open the cover (1).
- Twist off the screws and open the diffuser (2).
- Fix the fitting on the wall (3).
- Connect main supply wires to terminal block (4) making sure all connections are tight.
- Close the diffuser and twist on the screws (5).
- Push to click the cover (6)
- Reconnect power.

WARNING

- Make sure that the products is installed properly before connecting to electricity.
- Do not cover the fitting.



6



Push to click

