

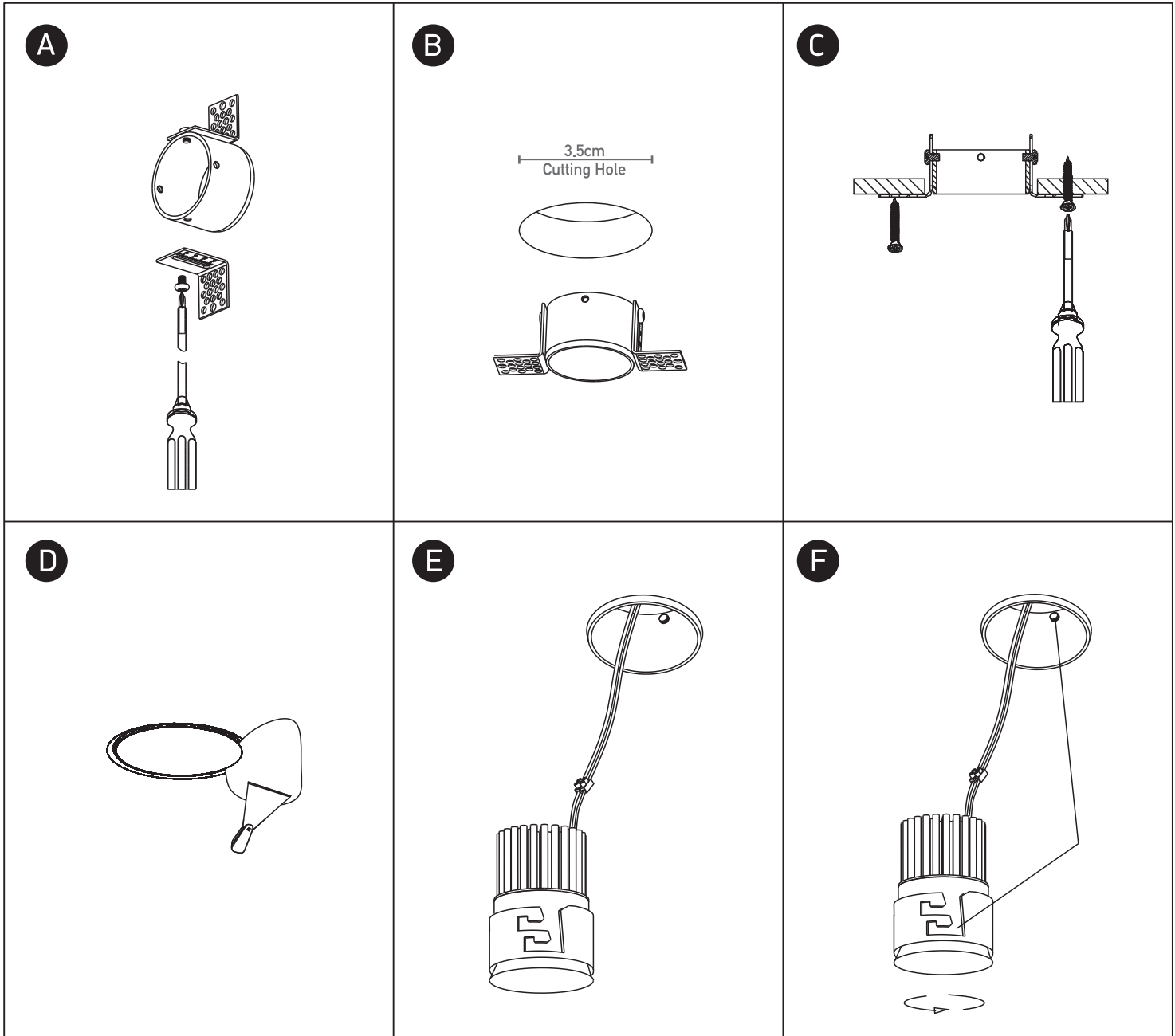
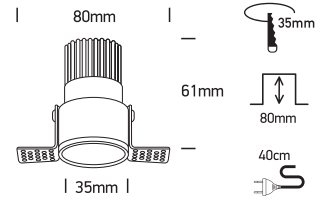
ecolight



DARK LIGHT
QUICK FIX

80 CRI

500mA | COB LED | 5W | 3000K | 580Lm
Requires 500mA driver LSCW500P for 1 Fixture
2-Step fitting.



Warnings:

1. Make sure that the product is installed properly before connecting to electricity.
2. Do not cover the fitting.
3. Maintenance and installation should only be carried out by a professional electrician.