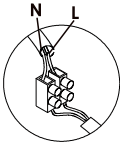




Please read instructions before commencing installation and retain for future reference.

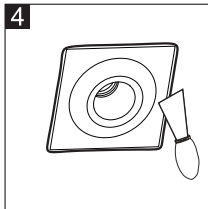
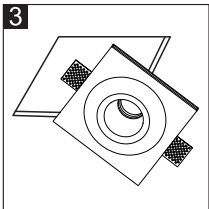
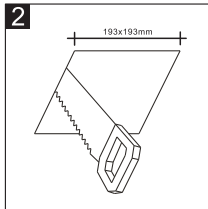
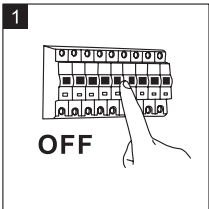


Connecting the Terminal Block

Connect main supply (brown - live, blue - neutral, green/yellow - earth) into terminal block making sure all connections are tight.

SPECIFICATIONS:

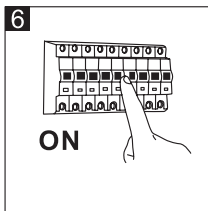
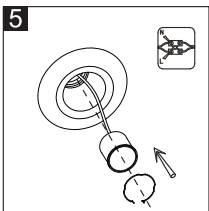
- **Fitting:** Gypsum
- **Lamp type:** LED 12W (Excluded)
Lamps and gears excluded unless otherwise specified
- **Protection against electric shock:** CLASS II.
- **Ingress Protection:** IP20. Protection against entry of solid objects greater than 12mm in diameter.
- **Quality/Corrosive rating:** QC21: Burning period: 12hrs/24hr cycle. Commercial use, indoor mainly - painted or plated metals. Not for use in corrosive environments.



INSTALLATION INSTRUCTIONS:

⚠ Electrical products can cause death, injury, or damage to property. Installation of this product must be carried out by a qualified electrician.

- Ensure mains supply is switched off.
- Cut a hole with proper size in the ceiling.
- Angle the fixture and insert into the ceiling, fix in place by screws.
- Plaster or fill the gap, paint the ceiling and surround.
- Insert LED bulb and position spring clip to retain it.
- Check if the installation is completed and turn on the power.



WARNING:

- Not for outdoor use or in wet conditions.

