

## GARDEN LIGHT


**E284** WITH SPIKE 

Please read instructions before commencing installation and retain for future reference.

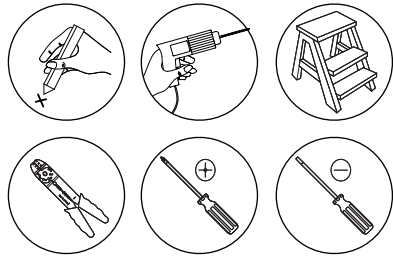
### SPECIFICATIONS

- **Material:** Aluminum - Tempered Glass
- **Lamp type:** 1x GU10, 20W MAX
- **Ingress Protection:** IP65. Protection against entry of solid objects greater than 12mm in diameter.

### INSTALLATION INSTRUCTIONS

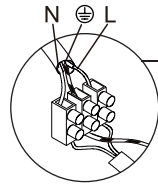
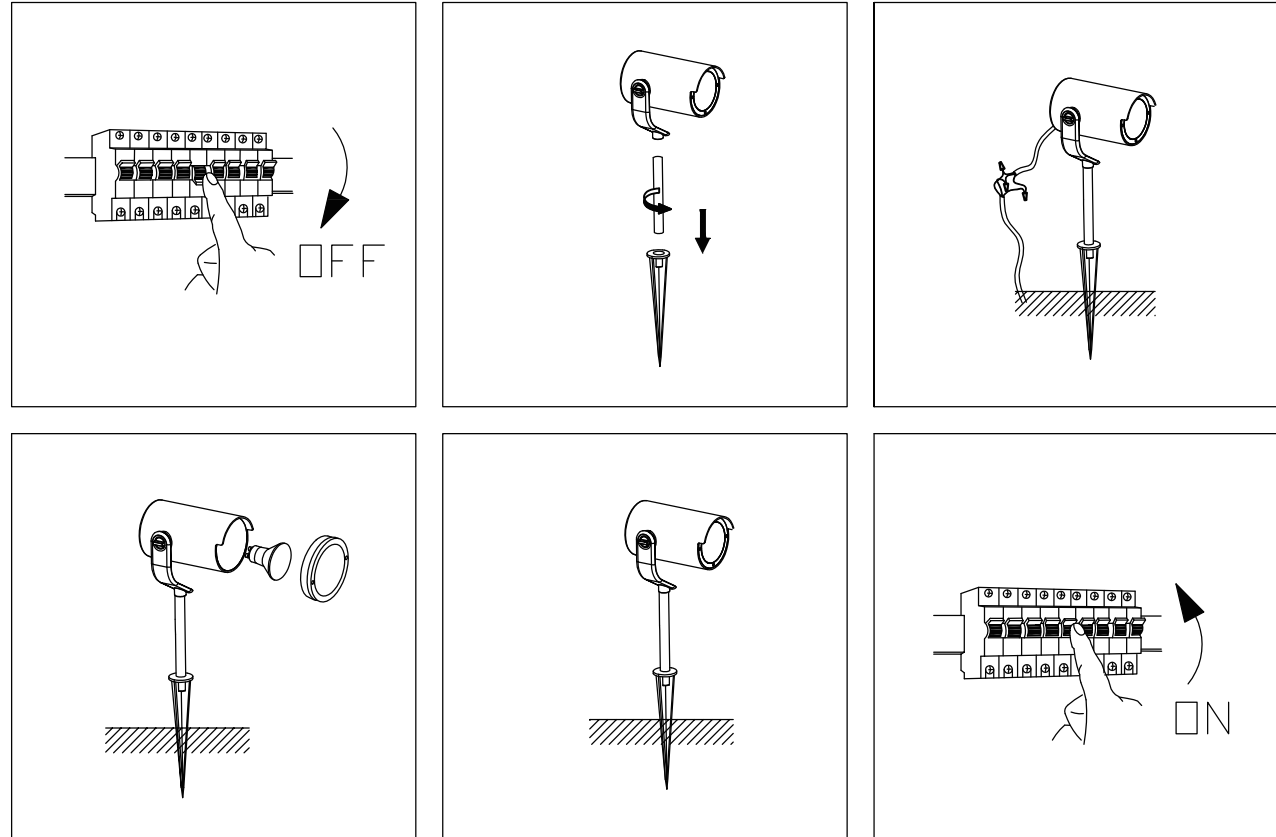
 Electrical products can cause death, injury, or damage to property. Maintenance and installation should only be carried out by a professional electrician.

- Ensure main supply is switched off.



### WARNING

- Make sure that the products is installed properly before connecting to electricity.
- Do not cover the fitting.
- Do not exceed the maximum wattage rating of the lamp.



#### Connecting the Terminal Block

Connect main supply (**brown - Live, blue - Neutral**) into terminal block making sure all connections are tight.

## GARDEN LIGHT


**E284** WITH BASE 

Please read instructions before commencing installation and retain for future reference.

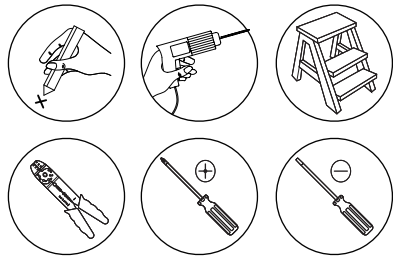
### SPECIFICATIONS

- **Material:** Aluminum - Tempered Glass
- **Lamp type:** 1x GU10, 20W MAX
- **Ingress Protection:** IP65. Protection against entry of solid objects greater than 12mm in diameter.

### INSTALLATION INSTRUCTIONS

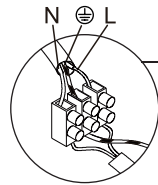
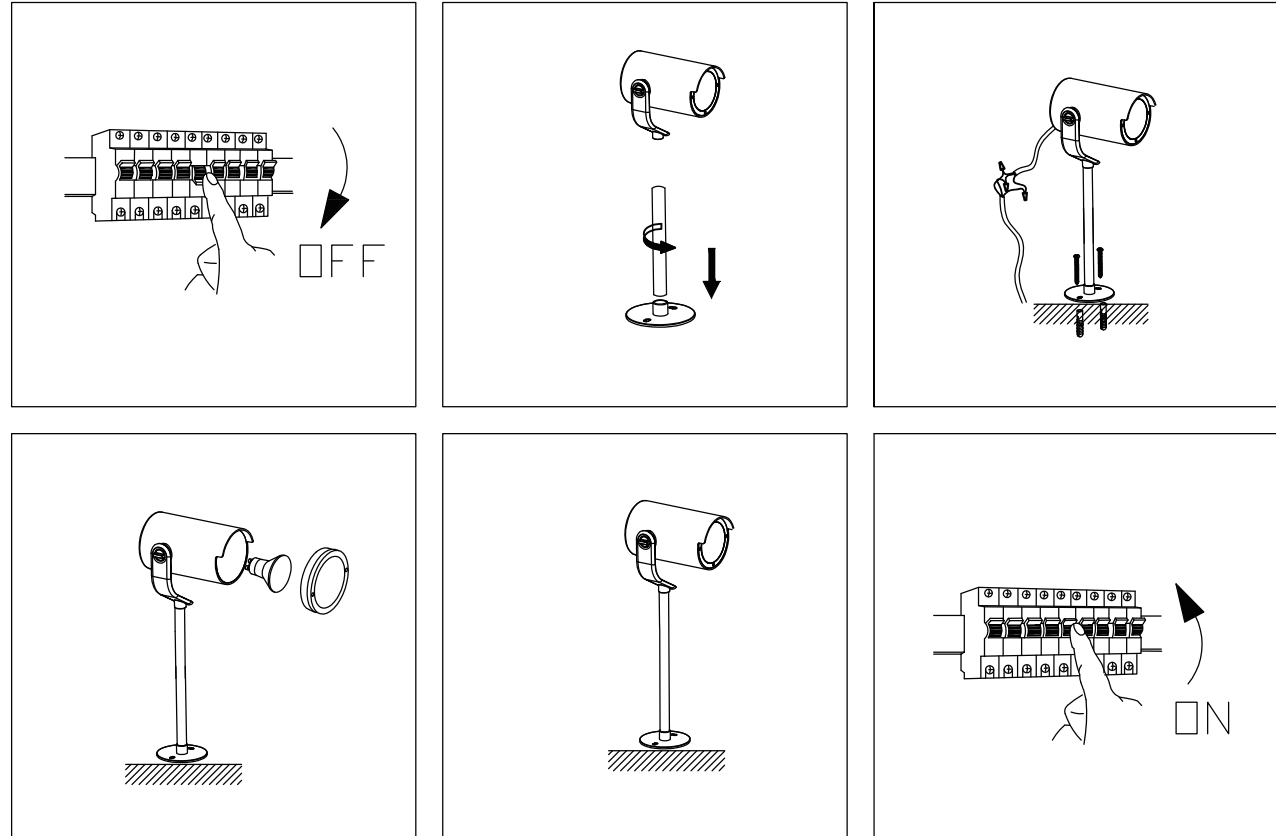
 Electrical products can cause death, injury, or damage to property. Maintenance and installation should only be carried out by a professional electrician.

- Ensure main supply is switched off.



### WARNING

- Make sure that the products is installed properly before connecting to electricity.
- Do not cover the fitting.
- Do not exceed the maximum wattage rating of the lamp.



#### Connecting the Terminal Block

Connect main supply (**brown - Live, blue - Neutral**) into terminal block making sure all connections are tight.