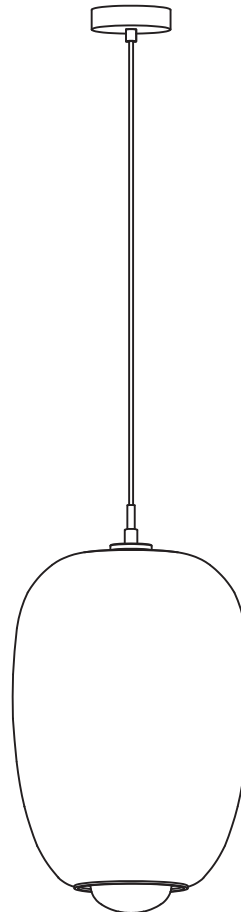
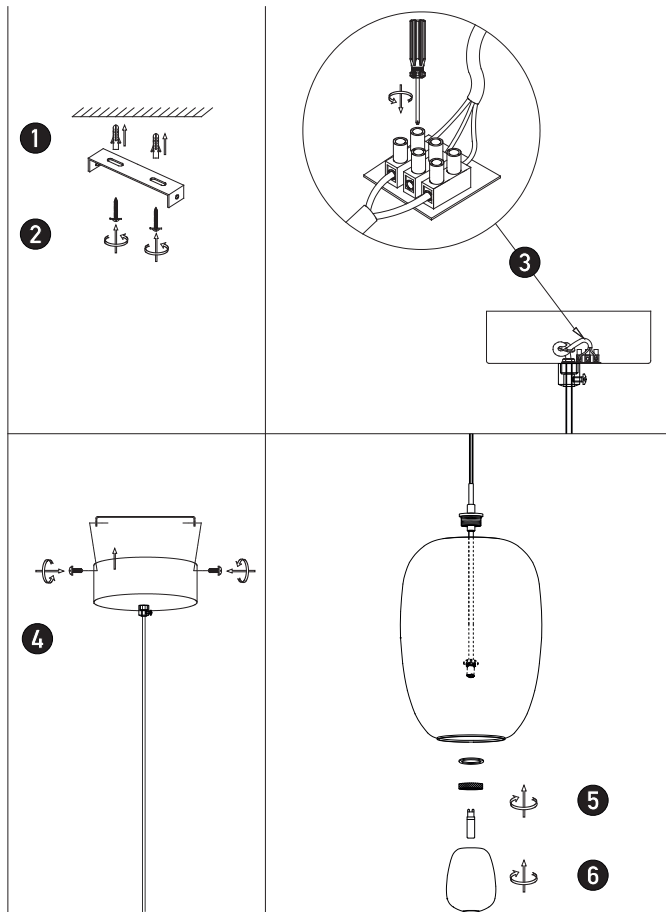




Connecting the Terminal Block

Connect main supply (brown - Live, blue - Neutral) into terminal block making sure all connections are tight.



PENDANT LIGHT

22056

Please read instructions before commencing installation and retain for future reference.

SPECIFICATIONS

- **Material:** Metal + Clear Glass + Opal Glass
- **Lamp Type:** 1x G9 LED , 7W MAX
- **Ingress Protection:** IP20. Protection against entry of solid objects greater than 12mm in diameter.

INSTALLATION INSTRUCTIONS

- ⚠** Electrical products can cause death, injury, or damage to property. Maintenance and installation should only be carried out by a professional electrician.
- Ensure main supply is switched off.
 - Insert the masonry plugs into the mounting surface (1).
 - Fit mounting bracket onto the mounting surface with the self-tapping screws (2).
 - Connect the main supply wires to the terminal block (3) making sure all connections are tight.
 - Fit the ceiling plate onto the mounting bracket with the screws (4).
 - Use the ring to secure the glass shade on the lamp-holder (5).
 - Install G9 LED lamp firmly into the lamp-holder, finally add the opal glass (6).
 - Reconnect power.

WARNING

- Make sure that the products is installed properly before connecting to electricity.
- Do not cover the fitting.
- Not for outdoor use or in wet conditions.
- Do not exceed the maximum wattage rating of the lamp.

