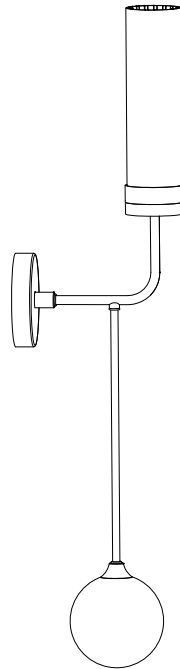
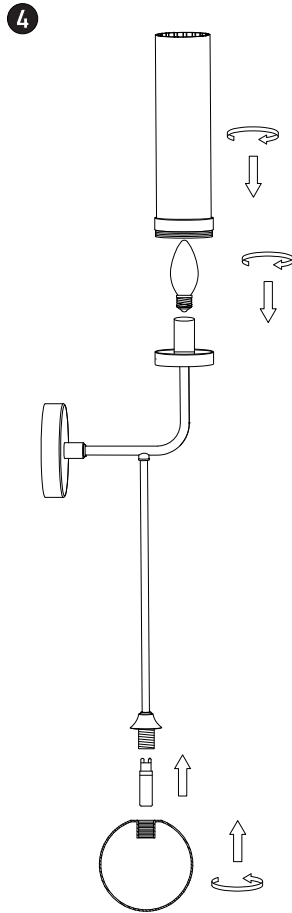
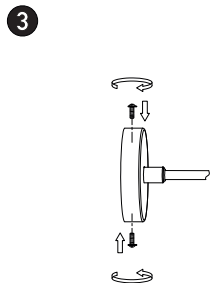
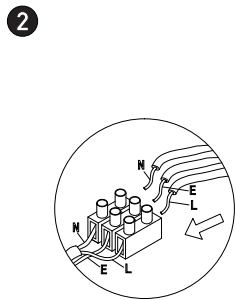
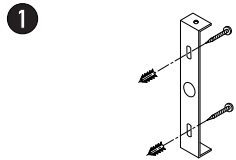




Connecting the Terminal Block

Connect main supply (brown - Live, blue - Neutral) into terminal block making sure all connections are tight.



WALL LIGHT

22054

Please read instructions before commencing installation and retain for future reference.

SPECIFICATIONS

- **Material:** Metal + Glass + Opal Glass
- **Lamp Type:** 1x G9 , 7W MAX | 1x E27 , 8W MAX
- **Ingress Protection:** IP20. Protection against entry of solid objects greater than 12mm in diameter.

INSTALLATION INSTRUCTIONS

⚠ Electrical products can cause death, injury, or damage to property. Maintenance and installation should only be carried out by a professional electrician.

- Ensure main supply is switched off.
- Insert the masonry plugs into the mounting surface.
- Fit mounting bracket onto the mounting surface with the self-tapping screws.
- Connect the main supply wires to the terminal block making sure all connections are tight.
- Fit the wall plate onto the mounting bracket with the screws.
- Install G9 and E27 lamps firmly into the lamp-holders.
- Screw clockwise all the glass shades till be safe.
- Reconnect power.

WARNING

- Make sure that the products is installed properly before connecting to electricity.
- Do not cover the fitting.
- Not for outdoor use or in wet conditions.
- Do not exceed the maximum wattage rating of the lamp.

