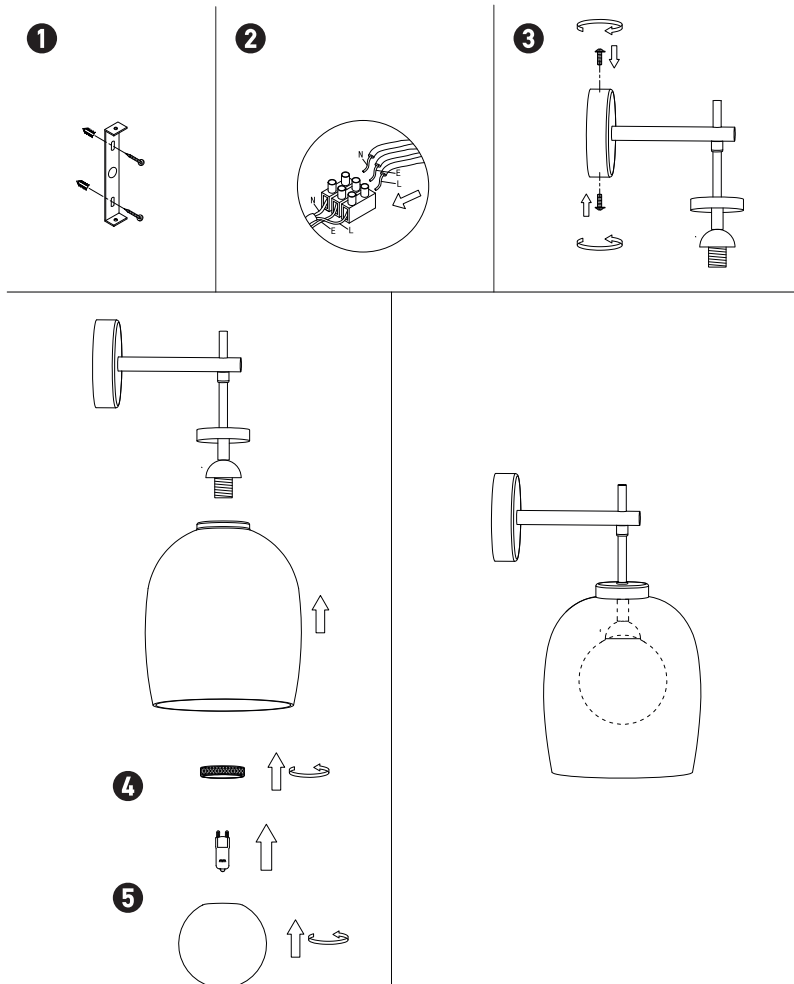


Connecting the Terminal Block

Connect main supply (brown - Live, blue - Neutral) into terminal block making sure all connections are tight.



WALL LIGHT

22052

Please read instructions before commencing installation and retain for future reference.

SPECIFICATIONS

- **Material:** Metal + Smoked Glass + Opal Glass
- **Lamp type:** 1x G9 Led , MAX 5W
- **Ingress Protection:** IP20. Protection against entry of solid objects greater than 12mm in diameter.

INSTALLATION INSTRUCTIONS

⚠ Electrical products can cause death, injury, or damage to property. Maintenance and installation should only be carried out by a professional electrician.

- Ensure main supply is switched off.
- Insert the masonry plugs into the mounting surface and fit the mounting bracket with self-tapping screws (1).
- Connect main supply wires to the terminal block making sure all connections are tight (2).
- Fit the wall plate onto the mounting bracket with screws (3).
- Use the ring to secure the glass shade on the lamp-holder (4).
- Install G9 LED lamp into the lamp-holder, finally add the opal glass (5).
- Reconnect power.

WARNING

- Make sure that the products is installed properly before connecting to electricity.
- Do not cover the fitting.
- Not for outdoor use or in wet conditions.
- Do not exceed the maximum wattage rating of the lamp.

